

Target - Machu Pichu/Peru/past

Page: 1.

Stage: 1.

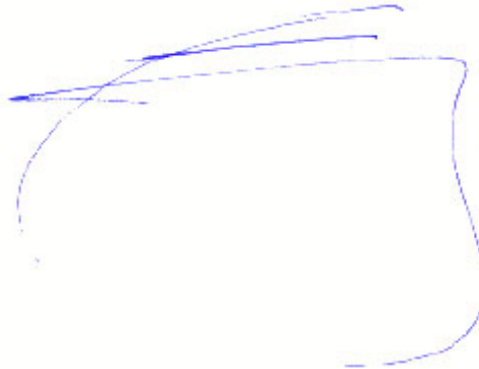
3.3.97.
9.12pm

3000
3003



A: Access
Down.
up.
Hornl.
B: Structure.

3000
3003



A: Access
Down
cur up
Access
Access
Solid
B: objects.

3000
3003



A: Access
up
Down
up
Down
up
Down
B: Water.

3000
3003

Access

Access

page: 2.

Stage: 2.

REMARKS

T1: hard. Soft, Mooring Small
Shorey Shiny.

ADL
Sraid

T2: Hor.

ADL
Sraid

V colors - Red, yellow, greens light
dark brown Blues
Lum - medium
Conc - high.

T3: Solly. Mixed with Saneling

AT
with
Phonology

D: Distinctive nose clearing, block.

D. V. long low photo.

H. Mixed sized wavy, bunched
+ regular.

D. yes sure

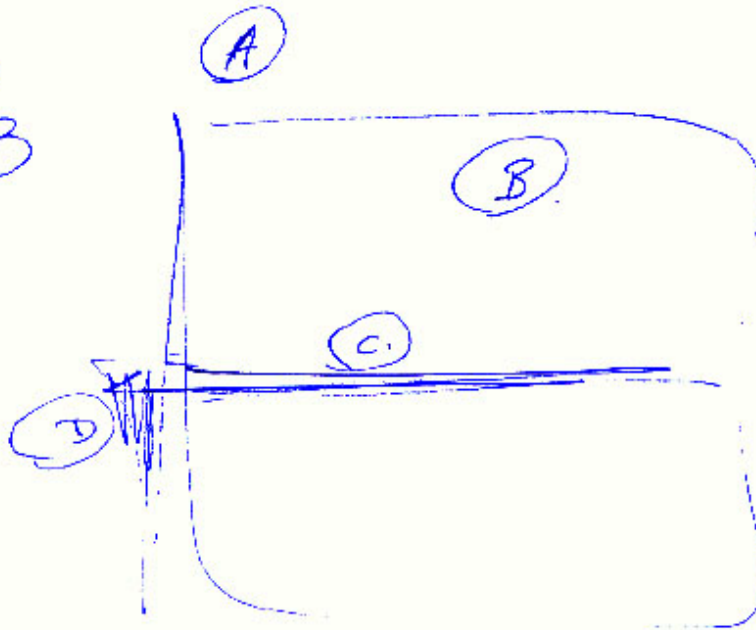
MOSV - wide open. Coax. Squab.
Halar

AT
feels
understanding
conflict of elements.

Page: 3

Stage: 3.

3000
3003



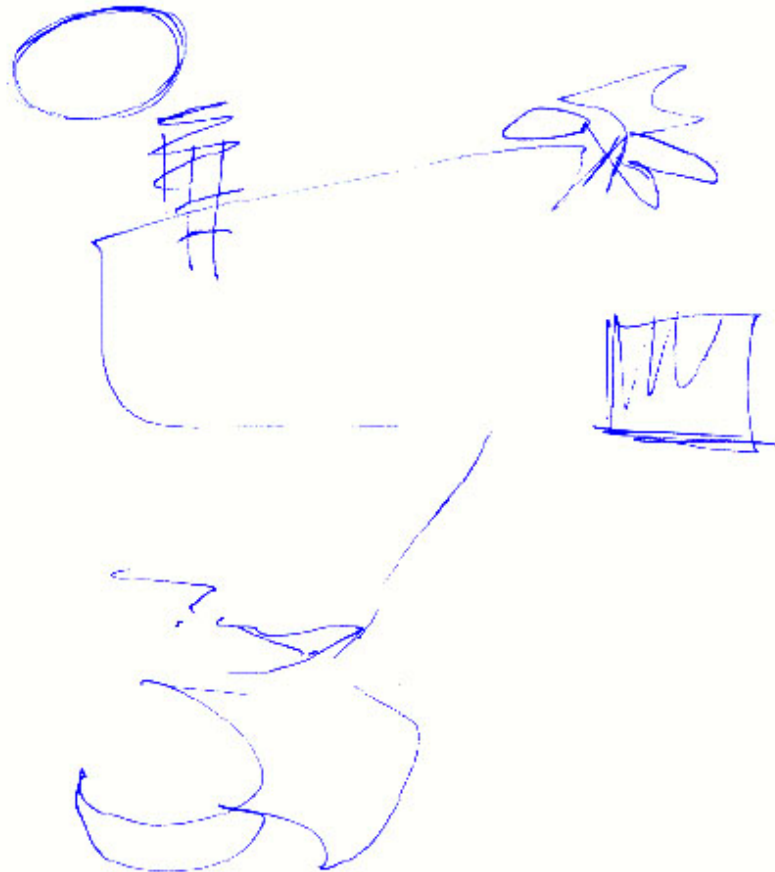
- (A): open space.
- (B): Solid hub angular, angled structure gear
- (C): Linear repeating stepped hub.
- (D): Cold strong hub interweaving connecting

Acis
metal.

Page: 4 .

Stage: 3.

Below Further Sketch + DESCRIBE.



Shapes and form connected by elements.
Structures and Sub Structures.

page:5

Stage:4.

S2 D AI ET T I Ae A-B

Horiz.
long
Dumont

Surface.

Cool
blue grey
tall
angled

walls.

clear.
misty
Cold. (roste).

air

Dusky
Tangy.
Sulphur.

Surface.

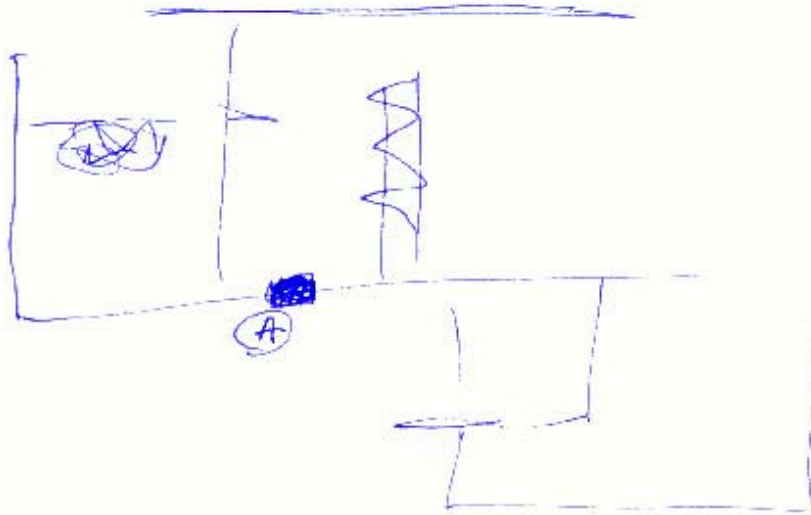
Hollow
Disturbing

A-B
planes

page: 6 .

Stage: 4.

S2 D AF EI T I AdL AdL3



Structure
Confined
walled

Buildings.

Busy
Workplace.
energy.
Importance.

(A)
word
Dark
talk

Base

Controlling
Machine.

page: 7.

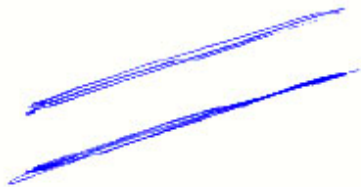
Stage: 4.

S2 D AI EI T I Ac AcB

Surprise
Naughtiness
Extreme.

erecting
linear.

long
leading lines almost forcing the eye/view.



white
solid
long
low.

slats.

page: 8

Stage: 4.

S2 D AI ET I APL APLB

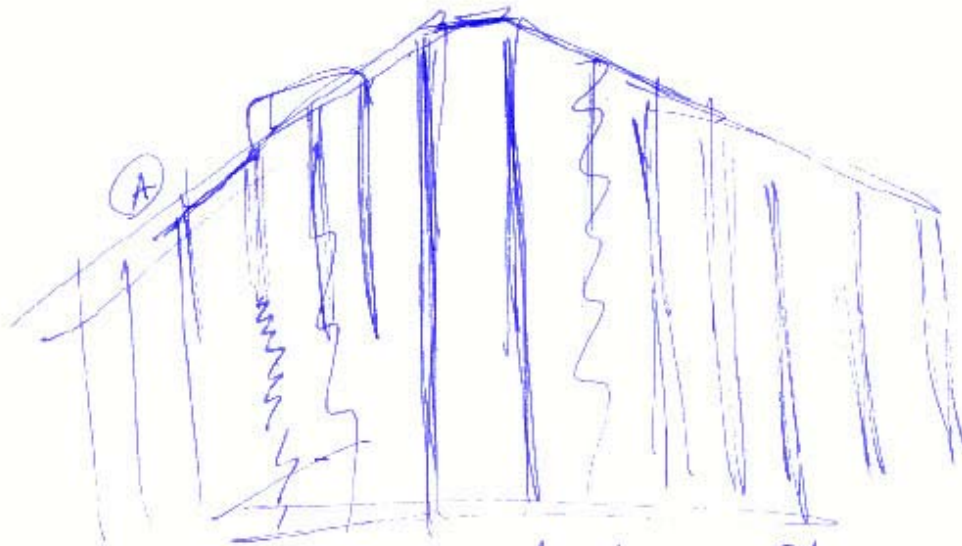
AT TARGET CENTER DESCRIBE

People

Activity
in use.

Usage

STRUCTURE
CONCEPTS



all - grey. Solid, angled Struck getting
Surface cold, large heavy Solid

APL-B
HOTEL.

Page: 9.

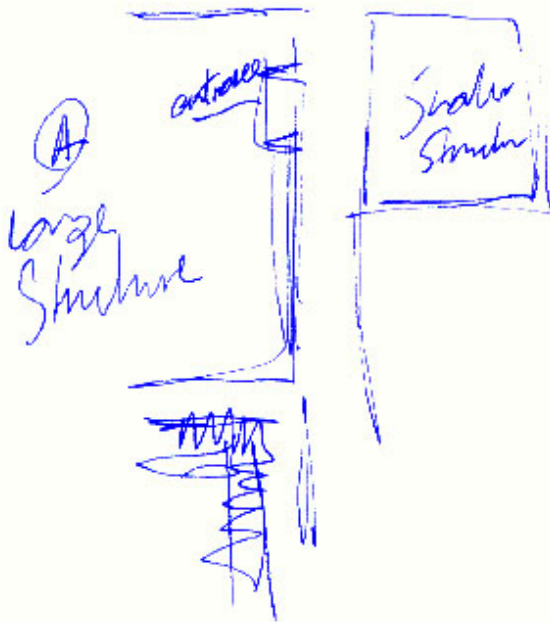
Stage: 4.

S2 ① AH EI T I AC AC-S

Engineering
Hollow

Ac-B
Panic
Station

Ac-B
New
P. Station.



Summary A Building to the target. The target is sold out heavy on a large scale. Many rooms and areas with different feelings probably subjects within each. Allot of lines parallel elements at the target site. The target felt very large on many levels with allot of artwork, form people - trees + vegetation on the outside of a protective element and for aesthetic reasons. At one edge of the target traffic is usable. The building is bot. with cool colors mainly grey and a blue (light sky).



3000/3003

MACHU PICCHU
PERU

PAST

Describe the target only

